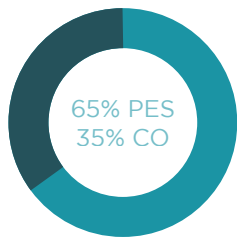


# LALIGNE 29

fama

## Features



- \*Composition
  - \*PES 65%
  - \*Recycled CO 35%
- \*Weight (gr/m2)
  - \*360 gr/m2
- \*Size (cm)
  - \*140 cm

rioma+



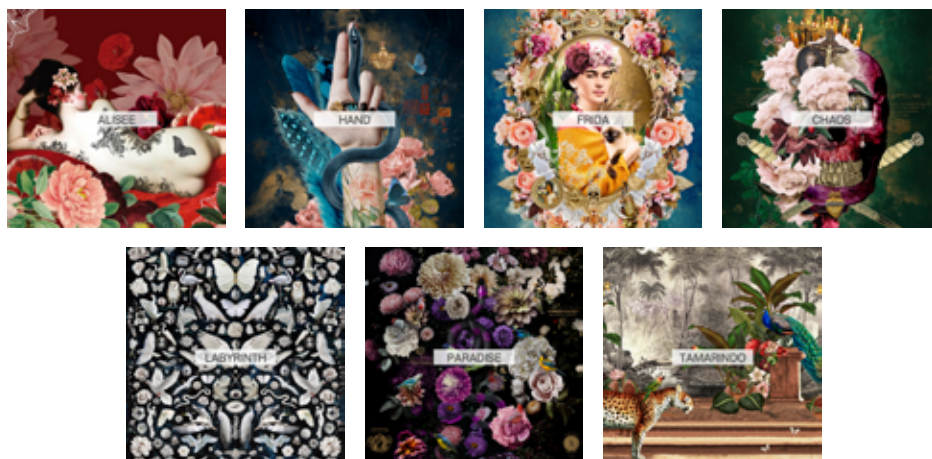
## Especificaciones

- Abrasion resistance:
  - UNE EN ISO 12947
  - 60.000 cycles
- Pilling Resistance:
  - ISO DIS 12945-2
  - 4-5 | Good
- British Standard
  - Cigarette test
  - BS 5852
- Shrinking
  - UNE EN ISO 5077
  - Warp | 0%
  - Weave | 0%
- Wash Fastness:
  - ISO 105 - C06
  - 4 | Good
- Colour fastness friction:
  - ISO 105 - X12
  - 4 | Excelent
- Colour fastness to light:
  - ISO 105 - B02
  - 4 | Good
- Colour fastness friction:
  - UNE EN ISO 13936 - 1
  - Warp | 3
  - Weave | 3

## Cleaning

- → Machine-washable (max. 40C)
- → Use bleach
- → Do not tumble dry
- → Dry wash, delicate
- → Iron, no steam

## Colours



LALIGNE 29 is manufactured by RIOMA for Fama Sofas whose quality system is certified by AENOR and IQNET, according to the ISO 9001-2015 standard, with certificate number ES-0790/1999 in addition to the Environmental Management certificate according to the ISO14001-2015 standard.



FAMA SOFAS S.L.U.  
C/ Barraquer | Roviral, 1 - P.O.Box 41  
30510 YECLA ( Murcia ) SPAIN  
Telf: 968751050 / info@fama.es / www.fama.es